

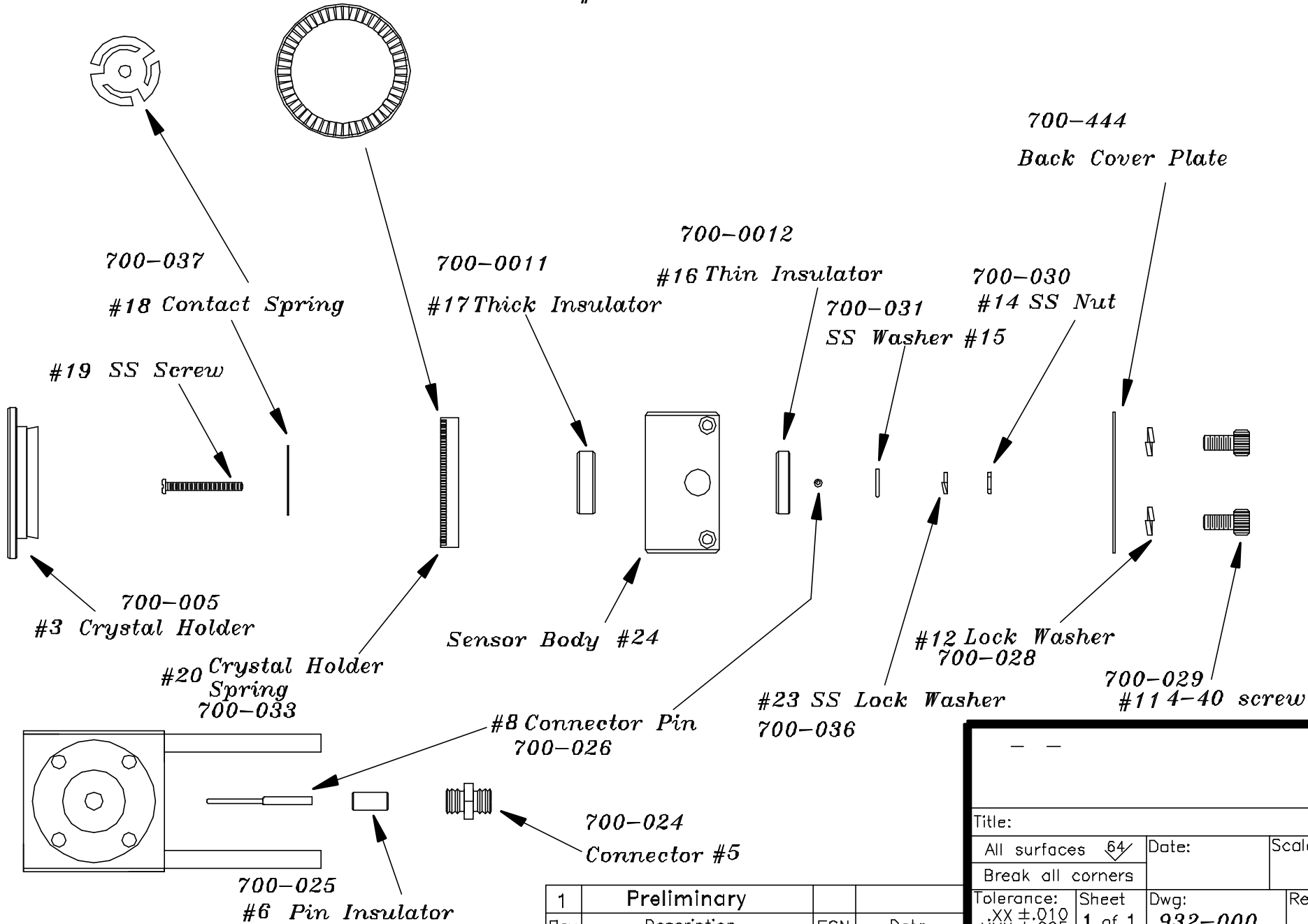
## FAQ 02-14: Sensor spare / replacement parts

Over time and use, it is normal to have to replace a few sensor components - insulators become coated with metallic deposits, springs lose their tension, etc. The parts list below is followed by drawings for the two most-used sensors. For convenience, a rebuild kit is available, containing the parts most frequently required.

### QCM Sensor Replacement Parts - US Prices effective May 1, 2002

012-020	Single Shutter.....	\$ 40
700-000	Single Sensor Body .....	\$ 40
700-005	Crystal Holder.....	\$ 85
700-008	Dual Sensor Body .....	\$ 200
700-012	Dual Shutter.....	\$ 45
700-017	Actuator Bracket .....	\$ 25
700-018	2-56 Hex Thumb Screw .....	\$ 18
700-021	Actuator Assy .....	\$ 700
700-024	Threaded Connector .....	\$ 30
700-025	Insulator.....	\$ 10
700-026	Pin Contact, Short.....	\$ 5
700-027	Pin Contact, Long .....	\$ 8
700-028	Lock Washer .....	\$ 2
700-029	4-40 Soc. Hd. Cap Scrw.....	\$ 2
700-030*	0-80 Hex Nut.....	\$ 5
700-031*	SS Washer .....	\$ 4
700-032*	0-80 Pan Hd Screw.....	\$ 4
700-033*	Finger Spring.....	\$ 15
700-034	Retainer Ring, SS .....	\$ 5
700-035	Spring, Xtal Holder.....	\$ 5
700-036*	SS Lock Washer .....	\$ 3
700-037*	Spring Contact, Gold.....	\$ 8
700-444	Sensor Back Cover.....	\$ 25
700-445	Backing Plate.....	\$ 28
700-446	Mounting Bracket.....	\$ 25
700-447	Spacer .....	\$ 18
700-888	Microdot Conn .....	\$ 22
700-889	Contact Spring Screw .....	\$ 4
700-890	Right Angle Shutter.....	\$ 45
700-0011*	Insulator, Center .....	\$ 28
700-0012*	Bottom Insulator.....	\$ 28
700-067	Rebuild Kit includes all parts above marked * .....	\$ 95

*Parts Breakdown for  
Sensor #932-000*



Title:			
All surfaces $\frac{64}{\sqrt{}}$		Date:	Scale:
Break all corners			
Tolerance: XX $\pm .010$ .XXX $\pm .005$	Sheet 1 of 1	Dwg: 932-000	Rev

1	Preliminary		
Rev	Description	ECN	Date

